

2024

IONIQ 5





Autotrader

¹Edmunds Top Rated Awards 2023. ²For more information, visit Kelley Blue Book's KBB.com. Kelley Blue Book is a registered trademark of Kelley Blue Book Co., Inc. ³Charging rate and time estimate varies based on factors including battery charge level, output of the charging unit, vehicle and battery settings and outside temperature. ⁴IONIQ 5 SE/SEL/Limited RWD 303-mile range based on a fully charged battery and 114 combined MPGe. MPGe is the EPA-equivalent measure of gasoline fuel efficiency for electric mode operation. All figures are EPA estimates and for comparison purposes only. Actual range and mileage will vary with options, driving conditions and habits, vehicle and battery's condition and other factors. ⁵Requires active data plan from Verizon and acceptance of Hyundai Motor America Connected Services Terms and Conditions. Coverage and service are not available in all areas. Wi-Fi hotspot is intended for passenger use only. Only use Wi-Fi and connected devices when safe to do so. See <https://www.verizon.com/plans/connected-car/> for terms and conditions. ⁶Qi wireless charging function is based on smartphone compatibility and/or specific accessory cases. ⁷For more information, visit Autotrader.com. Autotrader is a registered trademark and used with permission.

IONIQ 5 Limited AWD in Cyber Gray



The future is just minutes away.

IONIQ 5 is the all-electric vehicle whose time has arrived. That's not just us talking. The reviewers at Edmunds concluded IONIQ 5 is the Top Rated Electric SUV of 2023.¹ And IONIQ 5 received a 2023 Best Buy Award from Kelley Blue Book's KBB.com.²

What earns IONIQ 5 such positive reviews? Fast-charging capability, for starters.

With IONIQ 5, your electric future is just minutes away. It can take advantage of a 350 kW 800V DC Fast Charger – in approximately 18 minutes, you can go from a 10% to an 80% charge.³ A full charge can deliver up to 303 miles of range – making trips to your favorite campsites a little less remote.⁴ Wherever your travels take you, the IONIQ 5 brings innovations like a new Wi-Fi hotspot⁵ along for the ride.

One look at IONIQ 5, and its pixel-inspired light clusters and clamshell hood let you know this Hyundai EV is like nothing else on the road. Undeniably modern, its design signals a new era for electric vehicles – and with it, an entirely new series of next-level all-electric vehicles from Hyundai.

As you approach your IONIQ 5, you are greeted by automatically extending door handles – the first of many sophisticated features that await you. Step inside, and you'll see how a futuristic dashboard and center stack – along with an available sliding center console and wireless phone charger⁶ – give you more freedom. This focus on forward-thinking features is one of the many reasons why IONIQ 5 was named a 10 Best Electric Cars for 2023 by Autotrader for the second year in a row.⁷



Charge ahead.
And never look back.

IONIQ 5 Limited AWD in Cyber Gray

Press the pedal formerly known as ‘gas’, and the powerful electric energy of your IONIQ 5 launches it off the line and rockets you confidently into the passing lane. With a 225-hp Rear Wheel Drive powertrain, IONIQ 5 is a blast to drive. Available All Wheel Drive puts even more power underfoot, with 446 lb-ft of torque surging from a 320-hp dual-motor system. Either way, IONIQ 5 lets you choose from four driving modes (Eco, Normal, Sport or Snow) to suit your mood or road conditions.

Plug into a 350 kW DC Fast Charger for approximately 5 minutes, and you can add up to 68 miles to your driving range.¹ Enter a recognized DC fast charging station into the navigation

system as your destination, and a battery preconditioning feature can automatically initiate to warm IONIQ 5’s battery for quicker recharging in all weather conditions.

An available Premium Head-up Display with Augmented Reality lets you track your driving vitals and navigation at a glance. Have some recreational toys you want to bring along? No problem, thanks to IONIQ 5’s 2,300-pound towing capacity.² And with a combined fuel efficiency rating of up to 114 MPGe,³ IONIQ 5 gets your commuting costs under control. Here’s something else to help you go the distance: IONIQ 5’s lithium ion battery system comes with a warranty spanning 10 years or 100,000 miles, whichever occurs first.⁴

¹ Approximately 5 minutes on a 350 kW Fast Charger for trim levels equipped with a 77.4 kWh battery can provide an estimated driving range of up to 68 miles. Charging rate and time estimate varies based on a number of factors including current battery charge level, output of the charging unit, vehicle and battery settings and outside temperature. ² Towing capacity with trailer brakes. Towing not recommended for SE Standard Range RWD. Towing capability varies by configuration. See the towing guide in the Owner’s Manual for proper use and additional information. ³ EPA-estimated 114 MPGe for SE/SEL/Limited RWD models. MPGe is the EPA-equivalent measure of gasoline fuel efficiency for electric mode operation. All figures are EPA estimates and for comparison purposes only. Actual range and mileage will vary with options, driving conditions and habits, vehicle and battery’s condition and other factors. ⁴ Limited Battery Warranty covers defects in the factory workmanship or materials of the lithium ion battery, date of first use or 100,000 miles, whichever occurs first. Coverage does not apply to lease/commercial vehicles or vehicles serviced or registered outside the U.S. See your Owner’s Handbook for details and limitations. ⁵ Based on Brand Keys 2010, 2011, 2012, 2013, 2014, 2015, 2016, 2017, 2018, 2019, 2020, 2021, 2022 and 2023 Customer Loyalty Engagement Index*. ⁶ Lane Keeping Assist operates only when the lane markings are clearly visible on the road. It will not work under all circumstances and will not prevent loss of control. It is a supplemental assist and does not replace the need for extreme care and attention by the driver. It uses a camera in the upper windshield area, so it is imperative this area be free of blockage such as stickers, dirt, snow, tinting material, markings and labels. Avoid putting objects on the dashboard that may reflect light or images onto the system camera area. See Owner’s Manual for details and limitations. ⁷ Blind-Spot Collision-Avoidance Assist (BCA) assists the driver by warning of other cars in the blind spot region. It senses the rear side territory of the vehicle when traveling over 20 mph. There are limitations to the function, range, detection and clarity of the system. It will not detect all vehicles or objects in the blind spot. Its operation depends on the size, distance, angle and relative speed difference between your car and other cars. BCA may not operate if sensors are obscured in any way. BCA is a supplemental system, and it is the driver’s responsibility to be aware of the surroundings and ensure it is clear before changing lanes or directions. See Owner’s Manual for details and limitations. ⁸ Highway Driving Assist (HDA) is for highway use only and helps keep you centered in your lane while maintaining a safe distance from the vehicle ahead. Lane markings must be clearly visible on the road. HDA should not be used in poor weather, heavy or varying traffic, or on winding or slippery roads. HDA will not work under all circumstances and will not prevent loss of control. Driver remains responsible to slow or stop the car to avoid a collision. See Owner’s Manual for details and limitations. ⁹ Assisted lane change function occurs when the driver operates the turn signal while holding the steering wheel and driving over 37 mph. ¹⁰ Remote Smart Parking Assist (RSPA) can help remotely park your vehicle. RSPA may not function correctly if a parking sensor is damaged, dirty or covered, or if weather conditions (heavy rain, snow or fog) interfere with sensor operation. Always inspect the parking area with your own eyes. See Owner’s Manual for details and limitations. ¹¹ The Surround View Camera System (SVCS) is a parking support system. The Surround View Monitor cannot completely eliminate blind spots, may not detect every object and does not warn of moving objects. Always check your surroundings before moving your vehicle. See Owner’s Manual for details and limitations. ¹² The Blind-Spot View Monitor (BVM) assists in changing lanes by providing a live view of the blind spots on either side of the vehicle and sounding an audible alert if another vehicle is detected. The turn signal must be activated, and other system limitations apply. Do not rely exclusively on BVM. It is the driver’s responsibility to be aware of the surroundings and ensure it is clear before changing lanes or directions. See Owner’s Manual for details and limitations. ¹³ Government 5-Star Safety ratings are part of the National Highway Traffic Safety Administration’s (NHTSA) New Car Assessment Program (nhtsa.gov).

Hyundai SmartSense: It’s a really sweet suite.

For 14 years in a row, Hyundai has ranked #1 In Customer Loyalty according to global brand research consultancy Brand Keys.⁵ One reason more people who buy a Hyundai buy another: Hyundai SmartSense, our suite of advanced safety and driver-assist technologies. On IONIQ 5, SmartSense uses cameras, radar sensors and ultrasonic sensors to monitor your surroundings from nearly every angle and alert you to potential collisions.

Whenever your IONIQ 5 senses a situation that activates Lane Keeping Assist⁶ or Blind-Spot Collision-Avoidance Assist,⁷ it now alerts you via haptic feedback through the steering wheel. Highway Driving Assist (HDA) helps your cruise control maintain a safe distance from the vehicles detected in front of you, automatically adjusts for changing speed limits and reduces your speed as you approach curves in the road.⁸ Available HDA 2 enhancements respond to vehicles that cut into your lane at low speeds and vehicles that drive too close in the adjacent lane. It can even assist in making lane changes.⁹

Available features like Remote Smart Parking Assist¹⁰ and a Surround View Monitor¹¹ help ease parking maneuvers. Activate your turn signal, and your field of vision is enhanced by an available Blind-Spot View Monitor that displays live video in the instrument cluster from either side of the vehicle.¹² And in the event of a collision, the 2024 IONIQ 5 now has eight airbags to help protect you and your passengers, including new 2nd-row side airbags.



Premium Head-up Display with Augmented Reality (AR) functions



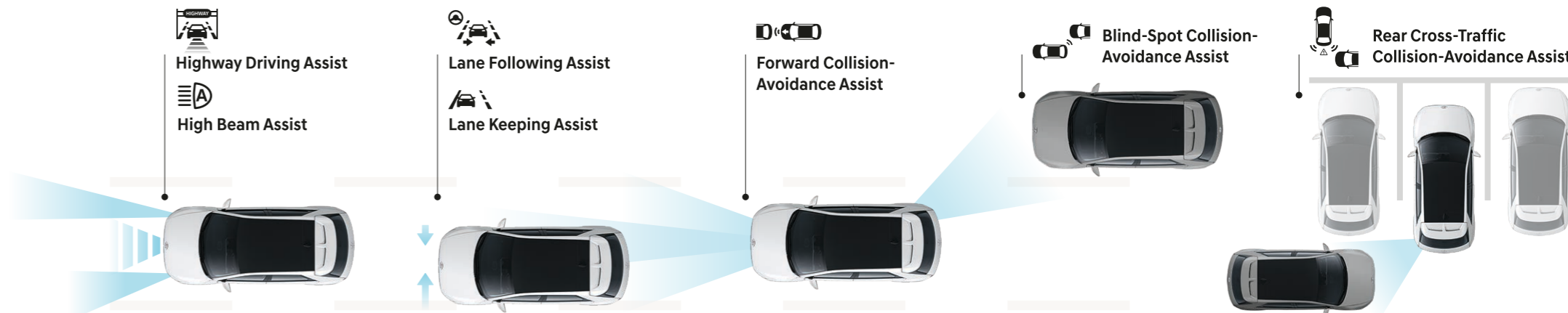
Surround View Monitor



Blind-Spot View Monitor



Hyundai SmartSense Technologies





IONIQ 5 Limited in Light Gray H-Tex™ with Gray Trim

A new species of spacious.

A completely flat floor – another benefit of not having a gas powertrain – gives IONIQ 5 so much interior space, it feels like you’re relaxing in your living room. Settle into IONIQ 5 Limited’s driver seat – you’ll enjoy the supple feel of H-Tex™ leatherette-trimmed seating and a reclining Relaxation Function that supports your legs while you rest.

Between the front seats, the IONIQ 5’s center console is like a floating island. To create more freedom of access, there’s an available sliding feature that moves it back and forth. The center armrest’s big surface area opens to reveal a storage tray and raises for improved access to a larger storage compartment – perfect for handbags. Dual cupholders and an available wireless phone charger offer you added convenience,¹ while an available glass Vision Roof expands your sense of spaciousness.

The 2nd-row seats feature reclining seatbacks and also slide for more legroom. Fold down the 2nd-row seats, and you’ll quickly convert your IONIQ 5 into a spacious hauler with the room you need for tackling your to-do list or a weekend road trip. An available Vehicle-to-Load (V2L) two-way charger beneath the 2nd-row seats and an available accessory adapter that plugs into the external charge port let you power up your TV, e-bike, laptop or latte machine simply by plugging into your IONIQ 5 Limited.²

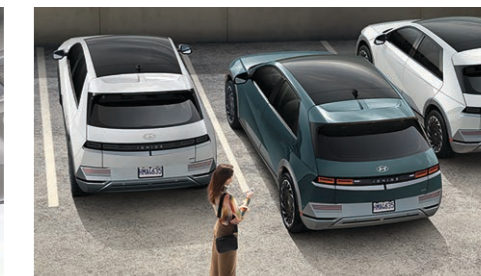
Apple CarPlay® and Android Auto™ let you sync up your smartphone’s playlist with an available Bose® premium audio system.³ You can connect two phones to the audio system simultaneously via Bluetooth® streaming, and everyone can stay plugged in with five standard USB ports – three up front and two in the 2nd row.



60/40 split-folding 2nd-row seats with recline & slide



Vision Roof



Remote Smart Parking Assist



12.3" Instrument cluster & touchscreen displays



Vehicle-to-Load (V2L) two-way onboard charger

¹ Qi wireless charging function is based on smartphone compatibility and/or specific accessory cases. ² Optional two-way charging will deplete the battery and becomes inoperable once the battery discharge limit reaches 20%. Not all electrical appliances will operate properly when using this feature. Do not use products that require a continuous power supply. Total power draw should not exceed 1.9 kW. ³ Apple CarPlay is a registered trademark of Apple Inc. Android Auto™ is compatible with Android™ phones running Android 5.0 or higher. Android Auto may not be available on all devices and is not available in all countries or regions. Additional apps may be required. Android and Android Auto are trademarks of Google LLC.

Introducing Bluelink+: No fees. No trial. No worries.

With the introduction of Bluelink+, Hyundai becomes the first automotive brand to offer its suite of connected car features to new car purchasers at no extra cost. Bluelink+ is complimentary with the purchase of your new 2024 IONIQ 5.¹

Bluelink features technologies designed to help keep you safe – from automatic collision notifications to automatic emergency assistance if your airbags deploy and enhanced roadside assistance that sends your exact location to a roadside assistance associate. Bluelink also includes helpful maintenance features like remote diagnostics and monthly vehicle health reports. All complimentary with a 2024 IONIQ 5 new vehicle purchase for the life of the supporting wireless network technology.²

Your MyHyundai app turns your compatible smartphone, smartwatch or smart home assistant device into a Bluelink remote control that can unlock your IONIQ 5's doors and turn on the vehicle and climate controls before you walk out the door.³

Starting your IONIQ 5 remotely, or with the available Digital Key, also tunes your radio and navigation system presets using your Bluelink personal profile settings.⁴ Want to remotely check and see if you've left your doors unlocked or the lights on? Simply consult your MyHyundai app. It's that easy.



Automatic Emergency Assistance

Bluelink offers you 24/7 SOS Emergency Assistance as well as Automatic Collision Notification that calls for help if you're in an accident where your vehicle's airbags deploy.⁵



Remote Vehicle Status

Wondering how much charge your IONIQ 5's battery has? If the doors are locked or your liftgate is closed? Your MyHyundai app knows the answers to these questions and more.



Remote Charge Access

You can control your IONIQ 5's charging remotely while it is plugged into an external power source, and schedule charging at specific times to take advantage of low-demand hours and rates.⁶



Remote Climate Controls

Preheating your IONIQ 5 when connected to a power source saves battery power that would be needed to heat the vehicle on the road. On warmer days, Remote Climate Control can cool your cabin before you drive.



Remote Vehicle Controls

Your compatible smartphone, smart speaker or wearable device lets you remotely start your IONIQ 5, set the cabin temperature, unlock the doors and more.



Destination Send-to-Car

Use the MyHyundai app to find points of interest that may not be updated on your vehicle's maps, then send the destination to your IONIQ 5's navigation system before you start driving.



IONIQ 5 Limited AWD in Cyber Gray



Apple CarPlay®

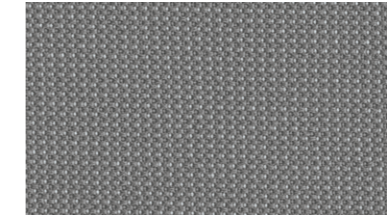


Digital Key

Interior Colors



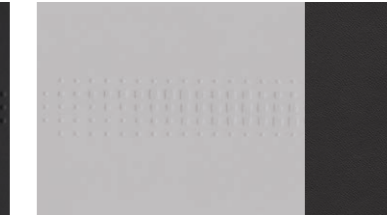
Black Cloth
SE / SEL



Gray Two-Tone Cloth
SE / SEL



Black H-Tex™
Limited

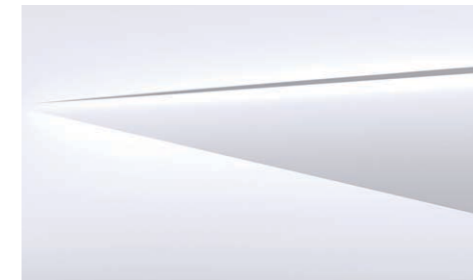


Light Gray H-Tex™ | Gray Trim
Limited

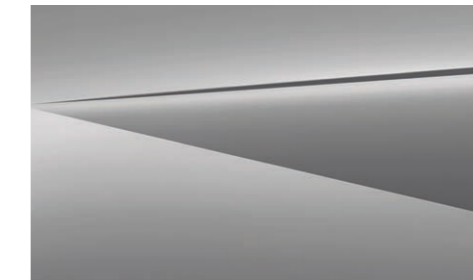


Light Gray H-Tex™ | Dark Green Trim
Limited

Exterior Colors



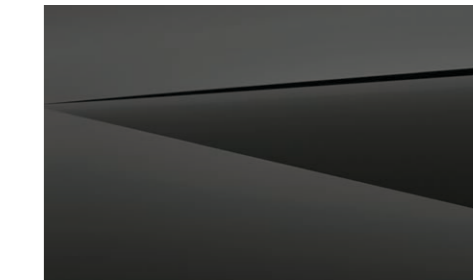
Atlas White



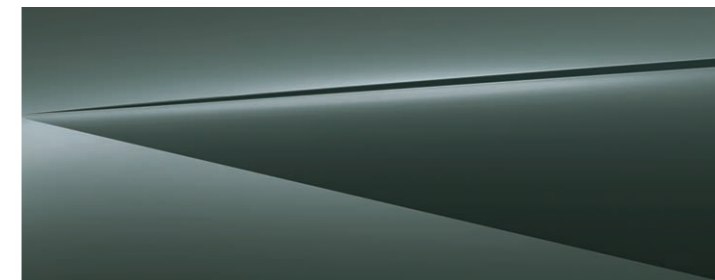
Cyber Gray



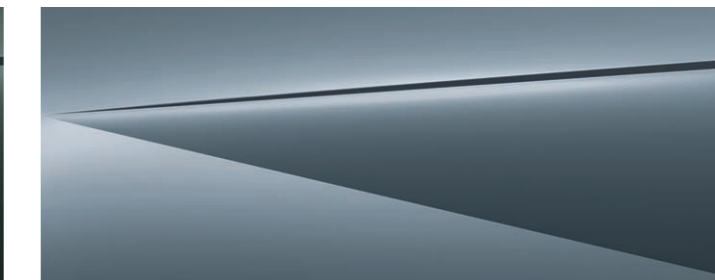
Abyss Black



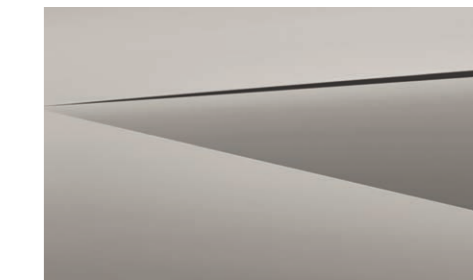
Shooting Star Matte



Digital Teal



Lucid Blue



Gravity Gold Matte

¹Bluelink+ requires an active subscription agreement subject to the Connected Services Terms and Conditions. Term starts from the new vehicle date of first use. Only use Bluelink and corresponding devices when safe to do so. Cellular and GPS coverage is required. Features, specifications and fees are subject to change. A fee will apply for map and multimedia over-the-air (OTA) updates, which are dependent on an active Bluelink connection, after an initial 3-year period of complimentary updates. For details and limitations, visit HyundaiUSA.com or your authorized Hyundai dealer. ²All Bluelink services rely on digital wireless telecommunications technology outside of our control and in the control of the wireless carriers who provide the telecommunications technology. 4G LTE cellular networks are controlled and maintained by third-party wireless carriers. Telecommunication technologies have been known to change over time. If and when these networks change and discontinue services, or the underlying technology required to support Bluelink is obsolete, then the connected services will not work and we will be forced to cancel impacted subscription services. ³Requires active Bluelink Advanced subscription (complimentary for the original owner). Remote climate control available on properly equipped models with fully automatic temperature control. Remote stop only available when in remote start mode. ⁴Near Field Communication (NFC) digital smartphone key requires a compatible Android smartphone and an appropriately equipped IONIQ 5 vehicle. Not all Android devices are compatible. IONIQ 5 vehicle must be equipped with smart key with push button start, wireless device charging, and Audio Video Navigation System 5.0 (or newer) or Display Audio 2.0. Lock/unlock functionality works on front doors only. Features and specifications subject to change. See your Owner's Manual for details and limitations. ⁵Bluelink agents will contact existing emergency service responders. ⁶Requires Bluelink Advanced package (complimentary for the original owner). For remote charging, vehicle needs to be plugged into an electrical socket. See Owner's Manual for details and limitations.

IONIQ 5 SE



Single-Motor Rear Wheel Drive Dual-Motor All Wheel Drive
168* / 225 HP **320** HP
 258 LB-FT 446 LB-FT

Popular Features
Ultra-fast charging system (up to 800V / 350 kW)
Battery heating system and battery preconditioning function
Parametric pixel LED headlights and LED taillights
Smart Cruise Control with Stop & Go Highway Driving Assist
Bluelink+ Connected Car System and Over-the-Air Map Updates
12.3" Digital instrument cluster
12.3" Navigation system
Dual automatic temperature control with Driver Only mode

*SE Standard Range RWD with 58 kWh battery & 168-hp motor

Exterior Dimensions	IONIQ 5
Wheelbase	118.1 in
Overall Length	182.5 in
Overall Width	74.4 in
Overall Height	63.0 in

IONIQ 5 EPA Estimates (City/Highway/Combined)

127/94/110 MPGe 220 Estimated All-Electric Range (EPA combined miles) SE Standard Range RWD	132/98/114 MPGe 303 Estimated All-Electric Range (EPA combined miles) SE/SEL/Limited RWD	110/88/99 MPGe 260 Estimated All-Electric Range (EPA combined miles) SE/SEL/Limited AWD
--	---	--

MPGe is the EPA-equivalent measure of gasoline fuel efficiency for electric mode operation. EPA estimates for comparison only. Mileage may vary. Your actual mileage will vary with options, driving conditions, driving habits and the vehicle's condition.

IONIQ 5 SEL



Single-Motor Rear Wheel Drive Dual-Motor All Wheel Drive
225 HP **320** HP
 258 LB-FT 446 LB-FT

Popular Features
Parking Distance Warning – Forward & Reverse
Highway Driving Assist 2
Smart Cruise Control with Stop & Go and Machine Learning
Heated steering wheel
Hands-free smart power liftgate with auto open
Auto-dimming rearview mirror with HomeLink®
Digital Key
Wireless phone charger

Interior Dimensions	IONIQ 5
Headroom – front / 2nd row (with Vision Roof)	39.8 / 38.7 (39.1 / 37.5) in
Legroom – front / 2nd row	41.7 / 39.4 in
Shoulder Room – front / 2nd row	57.7 / 57.7 in
Cargo Capacity – 2nd row seats up / down	27.2 / 59.3 cu ft
Passenger Volume	106.5 cu ft
Total Interior Volume	133.7 cu ft

IONIQ 5 Limited



Single-Motor Rear Wheel Drive Dual-Motor All Wheel Drive
225 HP **320** HP
 258 LB-FT 446 LB-FT

Popular Features
Blind-Spot View Monitor and Surround View Monitor
Remote Smart Parking Assist
Driver seat with Relaxation Function and Integrated Memory System
Bose® premium audio
Premium Head-up Display with Augmented Reality functions
2nd-row Vehicle-to-Load (V2L) two-way onboard charger
Vision Roof fixed panoramic sunroof with sunshade
Digital Rearview Mirror with HomeLink®

HTRAC All Wheel Drive Option
AWD dual-motor electric powertrain
HTRAC liftgate badge
Heat pump (heater)
20" Alloy wheels (Limited trim only)

Wheels



IONIQ 5

Power & Handling	SE	SEL	Limited
RWD 125 kW (168 hp) / 258 lb-ft permanent-magnet synchronous motor	●	–	–
58 kWh lithium ion battery	●	–	–
RWD 168 kW (225 hp) / 258 lb-ft permanent-magnet synchronous motor	○	●	●
AWD 74 kW + 165 kW (320 hp) / 446 lb-ft permanent-magnet synchronous dual motors	○	○	○
77.4 kWh lithium ion battery	○	●	●
Ultra-fast charging system (up to 800V / 350 kW)	●	●	●
Battery heating system and battery preconditioning function	●	●	●
Rack-mounted Motor-Driven Power Steering	●	●	●
Column-mounted Shift-by-Wire gear selector	●	●	●
Regenerative brake level control paddles	●	●	●
Multi-link rear suspension	●	●	●
2,300-lb towing capacity (77.4 kWh battery only)	○	●	●
Exterior Features	SE	SEL	Limited
Active grille shutters	●	●	●
Automatic headlights with High Beam Assist	●	●	●
Parametric pixel LED headlights and LED taillights	●	●	●
LED Daytime Running Lights	●	●	●
Projector-type LED headlights and premium front LED accent lighting	–	–	●
Heated side mirrors with LED turn signal indicators	●	●	●
Power-folding side mirrors	–	–	●
Flush door handles with automatic extend/retract	●	●	●
Premium gloss black exterior accents	–	–	●
Rear roof spoiler with center LED brake light	●	●	●
Vision Roof fixed panoramic sunroof with sunshade	–	–	●
Rear privacy glass	●	●	●
Front trunk	●	●	●
Hands-free smart power liftgate with auto open	–	●	●
Rearview camera	●	●	●
Rain-sensing front windshield wipers	–	–	●
Interior & Convenience Features	SE	SEL	Limited
Proximity Key with push button start	●	●	●
12.3" Digital instrument cluster	●	●	●
Leather-wrapped tilt-and-telescopic steering wheel	●	●	●
Dual automatic temperature control with Driver Only mode	●	●	●
2nd-row air conditioning vents and side-window sunshades	–	–	●
Cloth H-Tex™ seating surfaces	● –	● –	– ●
Driver seat with Relaxation Function and Integrated Memory System	–	–	●

Interior & Convenience Features	SE	SEL	Limited
8-way power driver seat and heated front seats	●	●	●
8-way power front passenger seat	–	–	●
Ventilated front seats	–	–	●
Heated steering wheel Ambient LED interior lighting	– –	● –	● ●
Premium door sill plates and sliding center console	–	–	●
60/40 split-folding 2nd-row seats with recline and slide	●	●	●
2nd-row Vehicle-to-Load (V2L) two-way onboard charger	–	–	●
Premium Head-up Display with Augmented Reality functions	–	–	●
Auto-dimming rearview mirror with HomeLink®	–	●	–
Digital Rearview Mirror with HomeLink®	–	–	●
Remote Smart Parking Assist	–	–	●
Smart Cruise Control with Stop and Go and Machine Learning	● –	● ●	● ●
Navigation-based Smart Cruise Control with Curve Control	●	●	●
Intelligent Speed Limit Assist	●	●	●
Highway Driving Assist (HDA HDA 2)	● –	– ●	– ●
Advanced Safety	SE	SEL	Limited
Forward Collision-Avoidance Assist with Pedestrian, Cyclist and Junction-Turning Detection	●	–	–
Forward Collision-Avoidance Assist with Pedestrian, Cyclist, Junction Turning/Crossing, Lane Change Oncoming, Lane Change Side Detection and Evasive Steering Assist	–	●	●
Lane Keeping Assist and Lane Following Assist	●	●	●
Blind-Spot Collision-Avoidance Assist	●	●	●
Rear Cross-Traffic Collision-Avoidance Assist	●	●	●
Driver Attention Warning	●	●	●
Blind-Spot View Monitor and Surround View Monitor	–	–	●
Safe Exit Assist and Rear Occupant Alert	●	●	●
Parking Distance Warning – Reverse Forward & Reverse	● –	– ●	– ●
Parking Collision-Avoidance Assist – Reverse	–	–	●
Audio & Connected Car Technology	SE	SEL	Limited
12.3" Navigation system	●	●	●
Bose® premium audio	–	–	●
SiriusXM® Satellite Radio and HD Radio™	●	●	●
Apple CarPlay®/Android Auto™ and Wi-Fi hotspot	●	●	●
Digital Key and wireless phone charger	–	●	●
Bluelink+ Connected Car System with Remote Charge Access	●	●	●
Hyundai Pay (late availability via software update)	●	●	●
Dynamic Voice Recognition	●	●	●
USB ports: Front (1 data/charge + 2 charge), 2nd-row (2 charge)	●	●	●

● Standard ○ Optional – Not Available



Hope comes standard on every Hyundai.

Each time we sell a Hyundai, a portion goes to Hyundai Hope On Wheels® to help find a cure for childhood cancer. Over the last 25 years, Hyundai Hope On Wheels has donated \$225 million to pediatric cancer research. Hope is our greatest feature. And it comes standard on every Hyundai. For more information, please visit HyundaiHopeOnWheels.org.



America's Best Warranty

POWERTRAIN LIMITED WARRANTY

10 YEARS
100,000 MILES

NEW VEHICLE LIMITED WARRANTY

5 YEARS
60,000 MILES

ANTI-PERFORATION WARRANTY

7 YEARS
UNLIMITED MILES

24/7 ROADSIDE ASSISTANCE

5 YEARS
UNLIMITED MILES

HYBRID/EV DIRECT ENERGY COMPONENTS

10 YEARS
100,000 MILES



Hyundai Complimentary Maintenance

Complimentary maintenance includes Hyundai-approved oil and oil filter change (except for electric vehicles and fuel cell electric vehicles) plus tire rotation at normal factory-scheduled maintenance intervals for 3 years or 36,000 miles, whichever comes first. More frequent maintenance due to severe driving or conditions excluded. Offer valid only for new 2020-2024 Hyundai models purchased or leased on or after February 1, 2020. See your Hyundai dealer for further details and limitations.



Owner Assurance

Our commitment to Hyundai owners does not end with the transfer of keys. Wherever the road takes you, we have got your back with Hyundai Owner Assurance, an umbrella of services and benefits that includes America's Best Warranty, 24/7 Roadside Assistance, innovative safety and car care features...and more.

While the information contained in this brochure is based on the latest information available at the time of printing, specifications and equipment can change. Feature comparisons are based on competitor information available at the time of printing. Although the information contained in this brochure is believed to be correct, accuracy cannot be guaranteed. No warranty or guarantee is being extended in this brochure, and Hyundai reserves the right to change product specifications and equipment at any time, without notice, without incurring obligations. Some vehicles are shown with optional equipment. Specifications apply to U.S. vehicles only. Please contact your Hyundai dealer or visit HyundaiUSA.com for current vehicle specifications or details on any of the programs or services listed here. As part of Hyundai's commitment to a responsible environment, this brochure was printed using paper certified by the Forest Stewardship Council®. FSC® certification helps ensure that the highest social and environmental standards are met in the making of the paper we use, contributing to conservation, responsible management and community-level benefits for people near the forests.



©2023 HYUNDAI NP020Y2024